



Summer
2024

ALBERTO

Aesthetic Balance

The ALBERTO Pants Culture

Stets ein Quäntchen innovativer, einen Hauch smarter und ein wenig detailversessener – zum Sommer 2024 stehen bei ALBERTO wieder alle Zeichen auf Pants-Kultur!

Dafür haben wir unser Passformprogramm nicht nur um ein Wide Fit-Segment erweitert und präsentieren unsere Chinos, Jeans, Shorts und Modern-Business-Pants in Leinen, Tencel™ und verschiedenen Hochleistungs-Baumwollmischungen. Wir haben ihnen auch neue Treatment-Techniken, frische Label- und Knopffarben sowie die passende Gürtelkollektion gegönnt. Was man in der kommenden Saison erwarten kann, verraten wir hier.

Always a bit more innovative, a touch smarter and more committed to the details – in the 2024 summer season, ALBERTO will once again launch a collection that is completely dedicated to its pants culture! To achieve this, we have not only expanded our perfect fit program by a wide fit segment and are presenting our chinos, jeans, shorts and modern business pants in linen, Tencel™ and a variety of high performance cotton blends. We have also splurged on new treatment techniques, fresh label and button colors and a matching collection of belts. In this publication, we will share with you what you can look forward to in the upcoming season.



*Light Organic
Cotton*





Wide fit
New Model **GLENN**

1505 GLENN, Light Organic Cotton | Belt: 8901 Premium Belt





Wide fit

Sie sind nicht nur ziemlich cool und äußerst lässig, sondern versprechen auch einen unschlagbar entspannten Tragekomfort – zum Sommer 2024 haben wir unser **Passform-Programm** um das Thema Wide Fit ergänzt. Zur Premiere zeigen wir hier gleich fünf Styles. ‚Jive‘ ist eine moderne, hoch geschnittene Five Pocket mit bequemem Sitz und schmaler Fußweite. Die neue ‚Glenn‘, eine High Waist Pants in cropped Länge mit raffiniert gesetzter Seitennaht weiß hingegen mit Bundfalten zu punkten. In puncto Beinweite noch einen Schritt weiter geht die neue High Waist Five Pocket-Jeans ‚Baggy‘. Ein echtes Highlight: die ‚Clark‘. Dank eingefasster Bänder und Knöpfen im Kniebereich sowie Gummizug und Steller am Saum kann hier sowohl die Beinlänge als auch die Beinweite individuell reguliert werden. Aufgesetzte Pattentaschen mit Ösen und ein Taschenfutter aus Mesh machen die Pants zu einem sportlichen Allrounder. Abgerundet wird das Wide Fit-Sortiment mit der ‚Jack-K‘, einer weit geschnittenen Bermuda mit Bundfalten und Gummizug.

1505 GLENN, Light Organic Cotton | Belt: 8901 Premium Belt



Light Organic Cotton

Not only are they cool and extremely casual, they also promise unbeatable and relaxed wearing comfort. For the summer season 2024 we have added the topic Wide Fit to our perfect fit program. The launch will consist of an amazing five styles. 'Jive' is a modern high waist five pocket that boasts a comfortable fit and a narrow leg width. 'Glenn', on the other hand is a high waist trouser in a cropped length with smartly positioned side seams in white that also has pleats. The high waist five pocket jeans 'Baggy' take the width one step further. The 'Clark' is a true highlight. Thanks to bound bands and buttons in the knee area as well as an elastic draw string and adjuster at the hem, both the leg length and the leg width can be customized for the desired fit. Patch flap pockets with eyelets and a mesh pocket lining turn these pants into a sporty all-rounder. The wide fit collection is completed by the 'Jack-K', a wide cut Bermuda featuring pleats and an elastic waist band.





Business
Cotton



Business *Cotton*

Sommerzeit, Chinozeit – der Run auf die leichten Baumwoll-Pants mit dem wunderbar lässigen Tragekomfort ist ungebrochen und mit gleich zwei neuen, hausgefärbten Made in Italy-Premiumartikeln setzen wir hier erneut ein echtes Statement.

0001 ROB, Business Cotton | Belt: 8901 Premium Belt



Summer is the perfect time for chinos – the demand for the lightweight cotton pants and their wonderfully casual wearing comfort is just as high this year.



1506 JUMP, Light Cotton

12 CASUAL



Light
Cotton

A man with dark hair and a beard is sitting on a large, moss-covered rock. He is wearing a dark short-sleeved button-down shirt with a vibrant blue and yellow floral pattern, bright blue trousers, and white sneakers. He is looking down and to his right. The background is a gravel path with shadows cast by trees and the rock.

Style
JUMP





1910 ROB, Premium Cotton



Premium
Cotton



Premium *Cotton*





Auch in der Sommersaison 2024 hält der Hype um Pants aus Leinen und Tencel™ unvermindert an. Kein Wunder, schließlich wissen die robusten Naturfasern nicht nur mit leichtem und lässigem Tragekomfort, sondern auch mit angenehm kühlenden Eigenschaften zu überzeugen.

The pants hype featuring the fabrics linen and Tencel™ will continue unabashedly in the 2024 summer season. This is only natural since the robust natural fibers do not only provide a lightweight and casual way to dress, but also have comfortably cooling properties that are very convincing.

A photograph of a person's legs from the knee down, resting on a large, mossy rock. The person is wearing light-colored trousers with a repeating pattern of stylized leaves in shades of pink, purple, and brown. They are also wearing light beige suede loafers with white soles. The background is a lush garden with green bushes and trees, and a house with a dark roof and a chimney is visible in the distance under a clear blue sky.

Tropical
Linen



Style
JUMP



Tropical
Linen



1930 JACK-K, Luxury Linen



Luxury
Linen
Bermuda



A man with dark hair and a beard, wearing sunglasses, stands in a lush, sunlit forest. He is wearing a short-sleeved, button-down shirt with a vibrant, abstract pattern in shades of purple, yellow, green, and blue. The shirt has a light blue trim along the collar, cuffs, and hem. He is also wearing light-colored, knee-length shorts. The background is filled with green trees and foliage, with sunlight filtering through the leaves.

Smart
Linen
Bermuda

Performance

Sie sehen nicht nur umwerfend gut aus – eine Vielzahl an intelligenten Funktionen und raffinierten technischen Features helfen auch dabei, den Alltag noch smarter und stylischer zu meistern. Die Pants unserer Performance-Serie haben sich seit ihrer Einführung vor eineinhalb Jahren zu echten Highlights im ALBERTO-Sortiment entwickelt. Ganz neu: das Modell ‚Mover‘, eine Normal Waist Slack aus hochelastischem, wasserabweisendem, atmungsaktivem und schnell trocknendem Revolutionary® mit schmal geschnittenen Beinpartien, Tunnelzug und kontrastfarbenen Bändern. Ebenfalls ganz frisch im Programm ist die ‚Clark‘. Gefertigt aus ultraleichtem, wasserabweisendem, schnell trocknendem, temperaturregulierendem und atmungsaktivem Coolmax® Superlight Hightech-Gewebe Made in Japan und ausgestattet mit aufgesetzten Pattentaschen mit Mesh-Innenfutter, bietet die sportliche Wide Fit dank Knöpfen und eingefassten Bändern im Kniebereich sowie Gummizügen und Stellern an den Beinenden die Möglichkeit, Beinlänge und -weite individuell einzustellen.

Not only are they astonishingly attractive – a large number of intelligent functions and refined technical features also help customers to master their everyday lifestyles more smartly and stylishly. Since their launch a year and a half ago, the pants in our performance series have evolved into true highlights in the ALBERTO portfolio. A completely new addition is the ‚Mover‘ model – normal waist slacks made of highly elastic, water repellent and breathable fabric that also dries very quickly – the Revolutionary® in slim cut legs, with draw strings and contrasting bands. Also entirely new in the collection is the ‚Clark‘. Made of ultra-lightweight, water repelling, quickly drying, temperature controlling and breathable Coolmax® Superlight High Tech fabric made in Japan and featuring patch pockets with mesh lining, the sporty wide fit offers the option to individually customize the leg length and width thanks to bound bands in the knee area as well as elastic draw strings and adjusters at the seams.

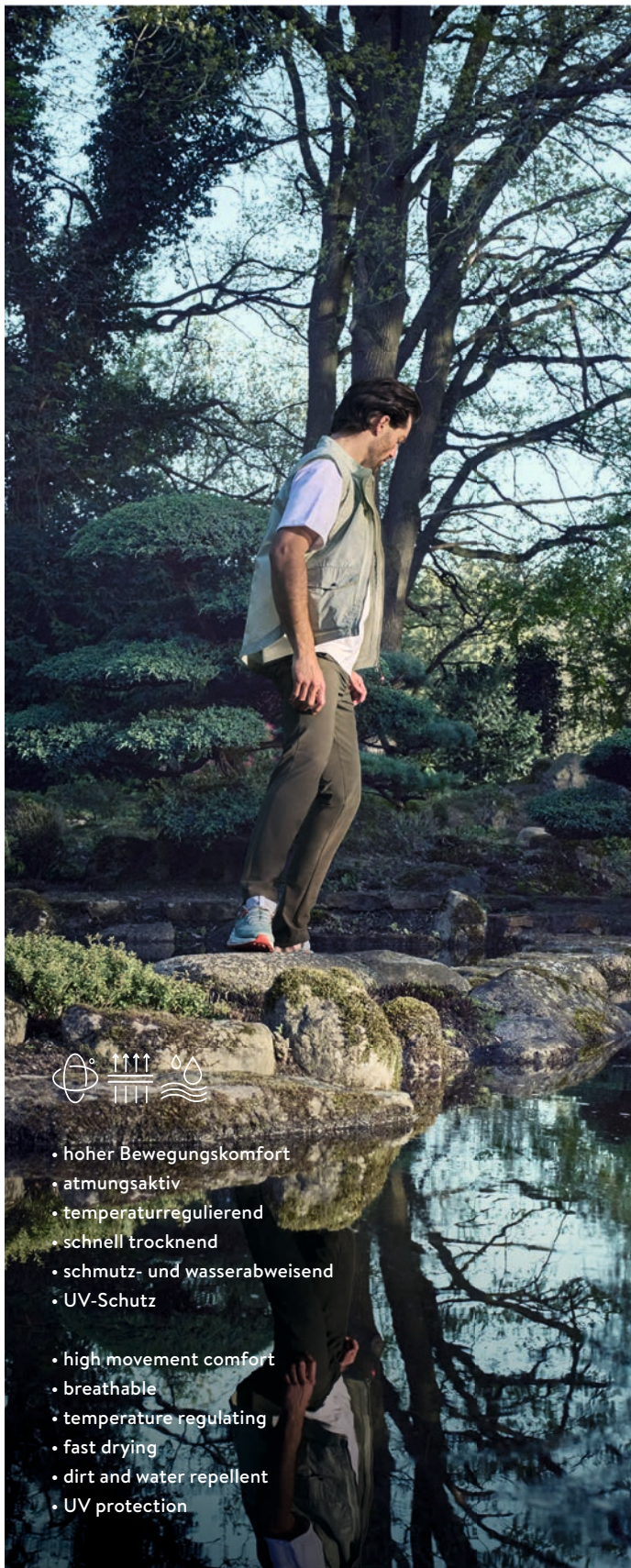


Coolmax[®]
Super Light
New Model
CLARK



Coolmax®
Super Light





- hoher Bewegungskomfort
- atmungsaktiv
- temperaturregulierend
- schnell trocknend
- schmutz- und wasserabweisend
- UV-Schutz

- high movement comfort
- breathable
- temperature regulating
- fast drying
- dirt and water repellent
- UV protection





REV
OLU
TION
NAL®



1904 STORM, Cool Tencel™



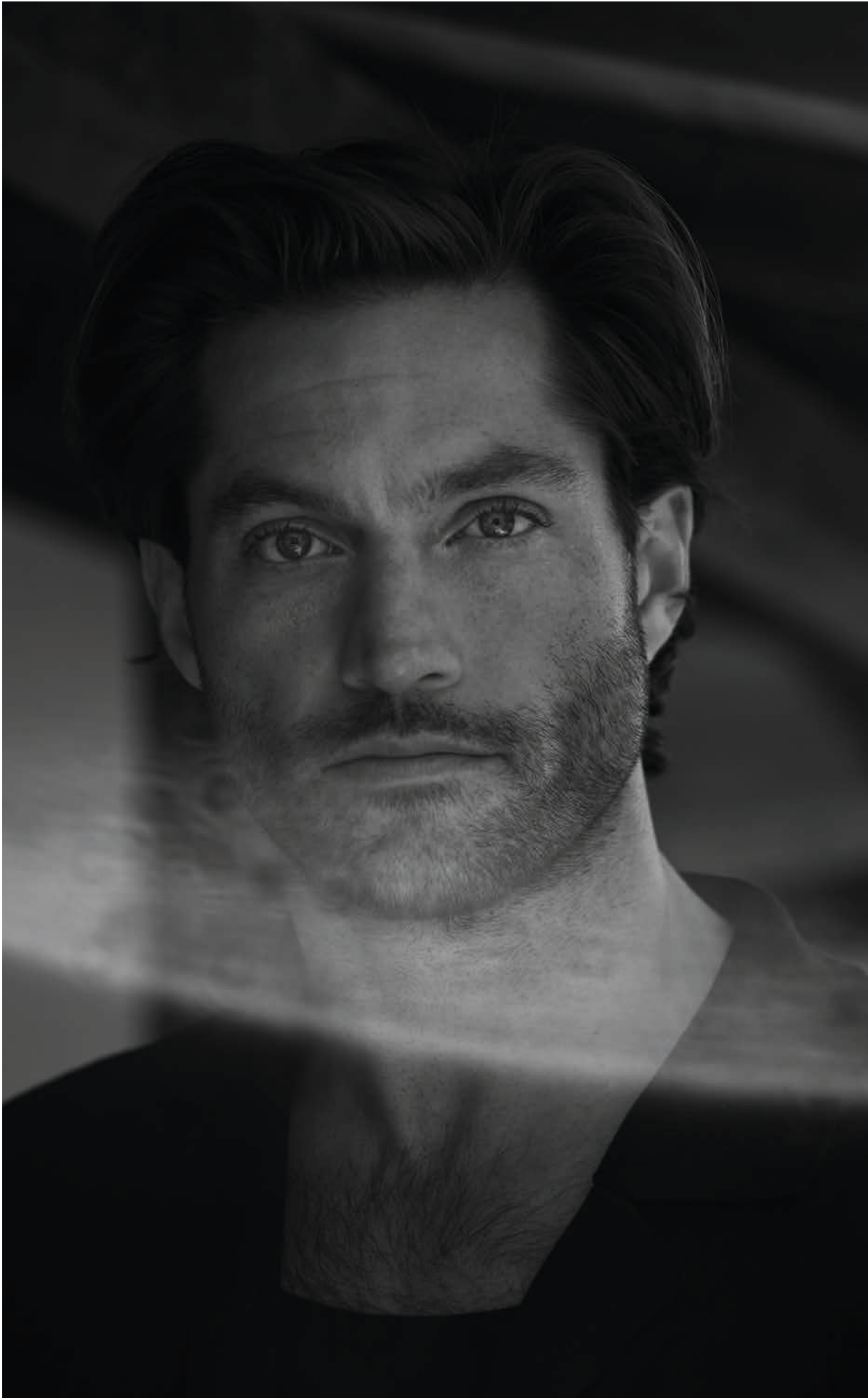
Cool
Cargo *Tencel*[™]
Pants



Tech
Wool



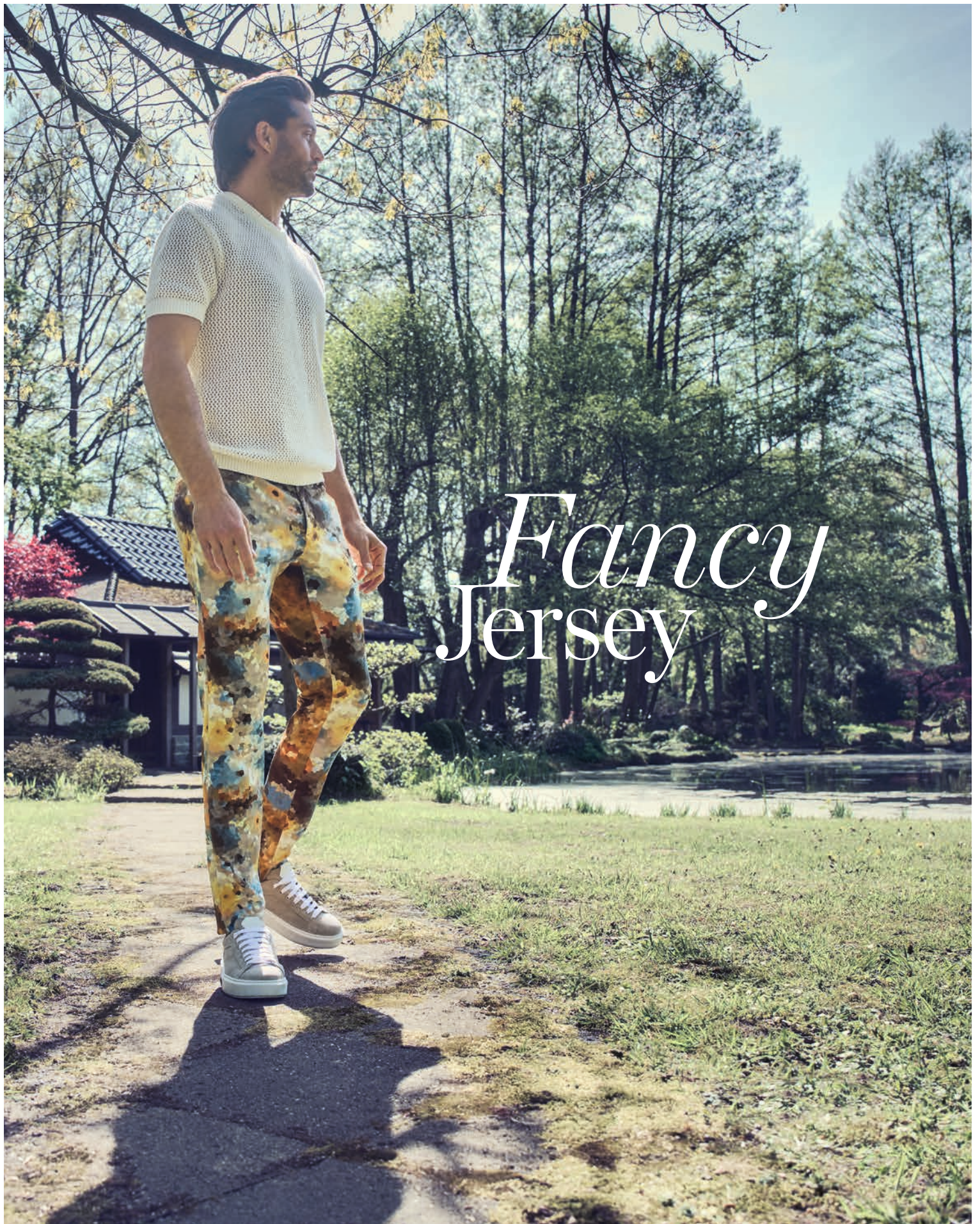




1941 ROB, Glencheck Jersey



Glencheck
Jersey



Fancy Jersey



®



© ZEN-Kloster

Schloss Eickhof

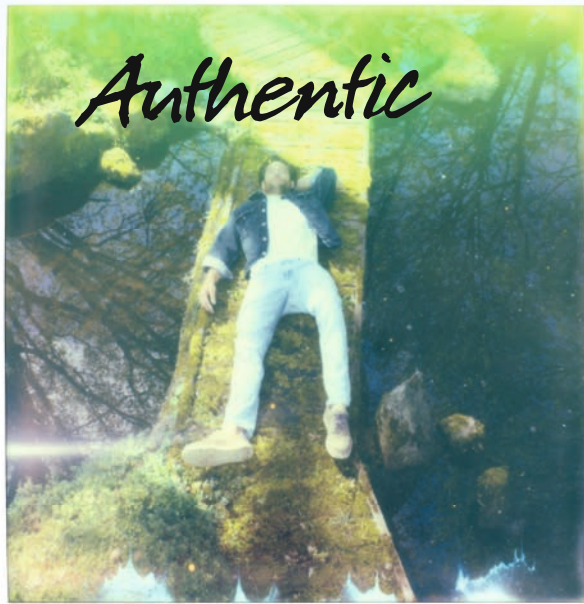
Liebenau · Niedersachsen



Einmal bauerlicher Gutshof, später Stammsitz einer Industriellenfamilie – das im 19. Jahrhundert erbaute Schloss Eickhof, idyllisch in der niedersächsischen Provinz zwischen Hannover und Bremen gelegen, blickt auf eine bewegte Vergangenheit zurück. Mit der Nutzung als Zen-Kloster mit angeschlossener Landschaftsgärtnerei für japanische Gartenbaukunst ist eine wunderbare Ruhe in die alten Mauern eingekehrt. Eine Atmosphäre der Stille und des Friedens, der uns sofort in seinen Bann zog und zudem eine unschlagbare Kulisse für das Shooting von ALBERTO Sommer 2024 bot.

Formerly a farm, later the seat of a family of industrialists – Eickhof Chateau, which was built in the 19th century is located in an idyllic setting in the country side of Lower Saxony between Hanover and Bremen. It looks back on a tumultuous past. Now it is being used as a Zen monastery with an agricultural garden featuring Japanese gardening tradition, which has brought a wonderful sense of calm into the ancient walls. An atmosphere of silence and peace that instantly enchanted us paired with an unbeatable backdrop provided the setting for the ALBERTO 2024 Summer Season shoot.

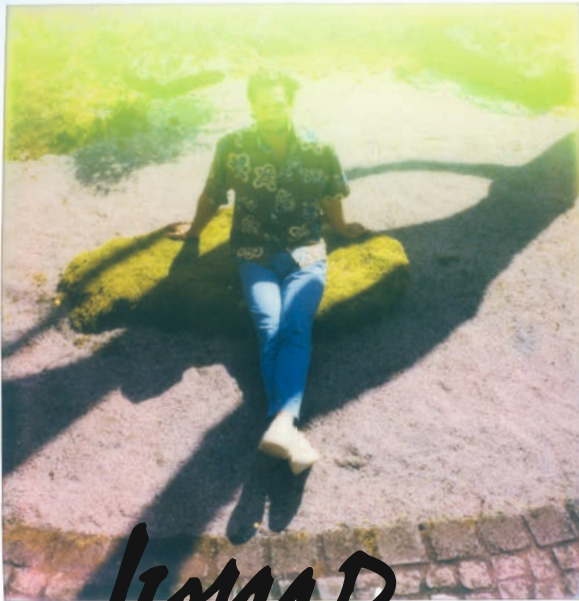
#COOLGERMANY



Authentic



Luxury Linen



Jump



Premium



Organic



Fancy



Performance



Natural

A man with a beard and long hair stands on a large, flat rock in a traditional Japanese garden. He is wearing a blue patterned denim vest over a white t-shirt, blue patterned denim jeans, and dark sneakers. The garden features a pond, various trees including a prominent red maple, and a traditional building in the background. The scene is captured in natural light, with the man's reflection visible in the water.

Laser
Denim



Made in Mönchengladbach

Minimaler Wasserverbrauch, keine umweltbelastenden Chemikalien und dazu eine extrem hohe **Energieeffizienz** – der Einsatz moderner Lasertechnologie in Waschprozessen ist nicht nur gut für Mensch und Natur, sondern sorgt auch für eine deutlich längere Lebensdauer der Stoffe. Dass das schonende Verfahren darüber hinaus auch völlig neue Designmöglichkeiten eröffnet, zeigen wir zur Sommersaison 2024 mit einem Stretch-Denim in gleich zwei verschiedenen Waschungen. Für die perfekte Umsetzung der von unserem 3D-Team entworfenen Lasergrafik in Gitteroptik auf den Jeans zeichnet die für ihre besonders nachhaltigen Produktionsstandards bekannte Mönchengladbacher Wäscherei 140Fahrenheit verantwortlich, mit der wir bereits erfolgreich die Born & Finished Bike Pants entwickelt haben.

File under: Vorsprung durch Technik.

Minimal water use, the absence of environmentally unsafe chemicals, paired with extremely high **energy efficiency** – the use of modern laser technologies in laundering process is not only beneficial for humans and nature, but also ensures a significantly extended useful life of the fabrics. In conjunction with the summer season 2024 launch, we will show that this gentle process also paves the way for completely new design options – in a **stretch denim** in two impressive and different washes. Mönchengladbach-based laundry service 140Fahrenheit is responsible for the perfect implementation of the laser graphics on the jeans developed by our 3D team thanks to its exceptionally sustainable production standards. Previously, we successfully developed the Born & Finished Bike Pants with this enterprise.

File under: Advancement through technology.



Laser. *Denim*







*The Jeans
Chino*



Wir legen uns fest und küren unsere Natural Denims zu den Must-haves des Sommers 2024. Warum? Ganz einfach: Sowohl in der Rigid- als auch in der Stretch-Variante bestehen die ungefärbten und nur kurz gewaschenen Jeans mit einer Natürlichkeit und authentischen Charakterstärke, die ihresgleichen sucht. Besonders als stylische ‚Jive-C‘, einer cropped Jeans in Cotton-/Stretch-Variante entfalten die Denims ihr ganzes Können.

We are ready to make a commitment and are curating our Natural Denims as an addition to the must-haves for the 2024 summer season. Why? The answer is simple: in both, the rigid and the stretch version, the undyed and only briefly laundered jeans will win customers over with their unrivaled naturalness and authentic strength of character. Especially in the stylish ‚Jive-C‘, a cropped pair of jeans in a cotton/stretch version, these denims do it all perfectly.

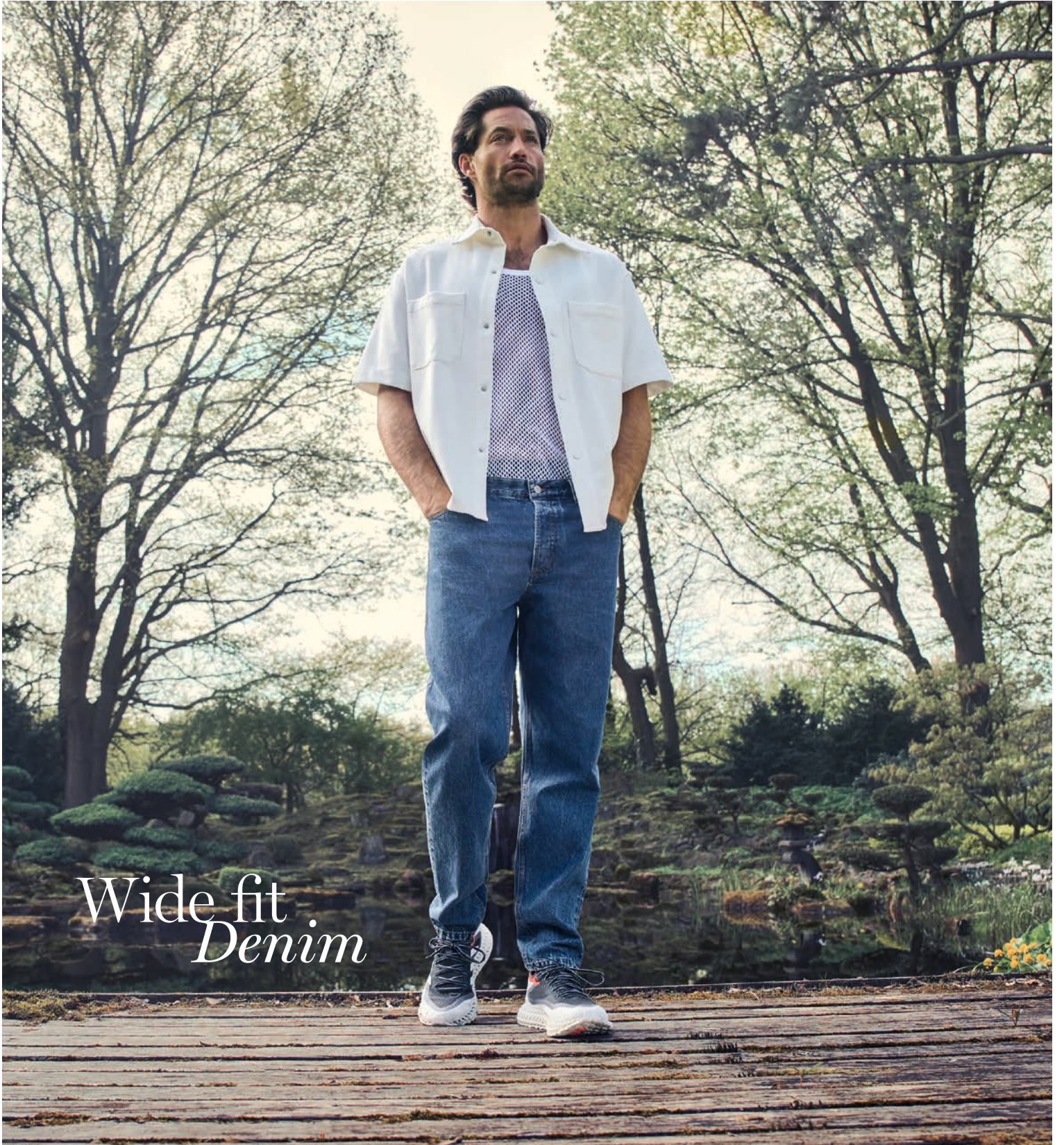
1956 JIVE-C, Natural Denim | Belt: 8902 Selvedge Belt



A traditional Japanese garden featuring a pond with a stone path leading across it. The rocks are covered in moss, and the water reflects the surrounding greenery and trees. The scene is peaceful and well-maintained.

Wide fit .
Denim





Wide fit
Denim





Auch bei den Premium-Denims geht es ausgesprochen farbig zu. Konsequenterweise an der Koloritschraube dreht sich eine Serie von coloured Superstretch-Jeans. Die Farbrange reicht hier von Navy, Dust und Green Fig bis hin zu Rose, Chalk und Glacial Blue. Die aus leichtem 8 oz. Denim gearbeitete Light Tencel™ kommt nicht nur mit besonders leichtem Griff und in authentischen Waschungen daher, sondern sorgt auch bei sommerlichen Temperaturen für einen angenehm kühlen Tragekomfort. Einmal mehr ein echtes Highlight: unsere Red Selvedge Jeans aus edlem High End Japan Denims.

Abgerundet wird das Premium-Programm mit einer in zehn Colourways erhältlichen Gürtelserie Made in Italy aus weichem Veloursleder, die sich an den Farbstellungen unserer neuen Hosenlabel orientiert.

1961 SLIM, Premium Overdyed Denim | Belt: 8901 Premium Belt



Premium Jeans

Our premium denims also come in a wide array of colors. A series of colored super-stretch jeans covers a variety of hues. The color range runs from navy, dust and green fig to rose, chalk and glacial blue. Made of lightweight 8 oz. denim, the Light Tencel™ boasts a particularly light feel and authentic washes, yet it also ensures pleasantly cool wearing comfort in summer temperatures. Once again, a real highlight: our Red Selvedge Jeans made of fine high-end Japanese denims.

The premium collection also includes a belt series made in Italy made of soft velour leather available in ten colors based on the hues of our new pants label.

A man with long hair, wearing a quilted camouflage jacket, blue denim jeans, and tan suede shoes, is walking through a lush garden. The garden features moss-covered rocks and various green plants. In the background, a large, multi-story brick building with arched windows is visible. The scene is bathed in warm, golden light, suggesting late afternoon or early morning.

Vintage Denim

1973 SLIPE, Super Stretch Dual FX Denim



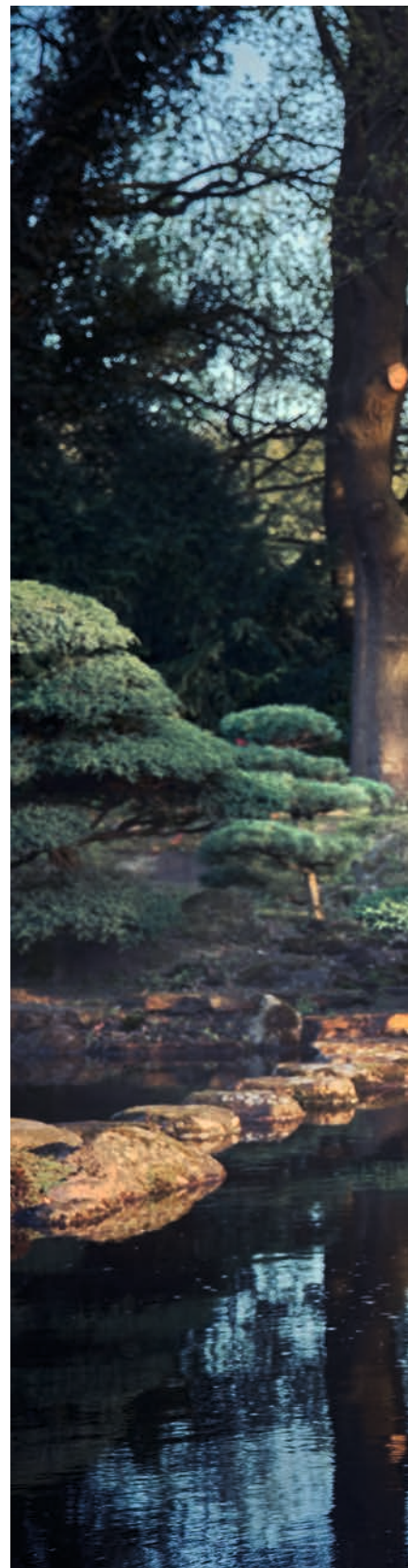


Vintage
Denim





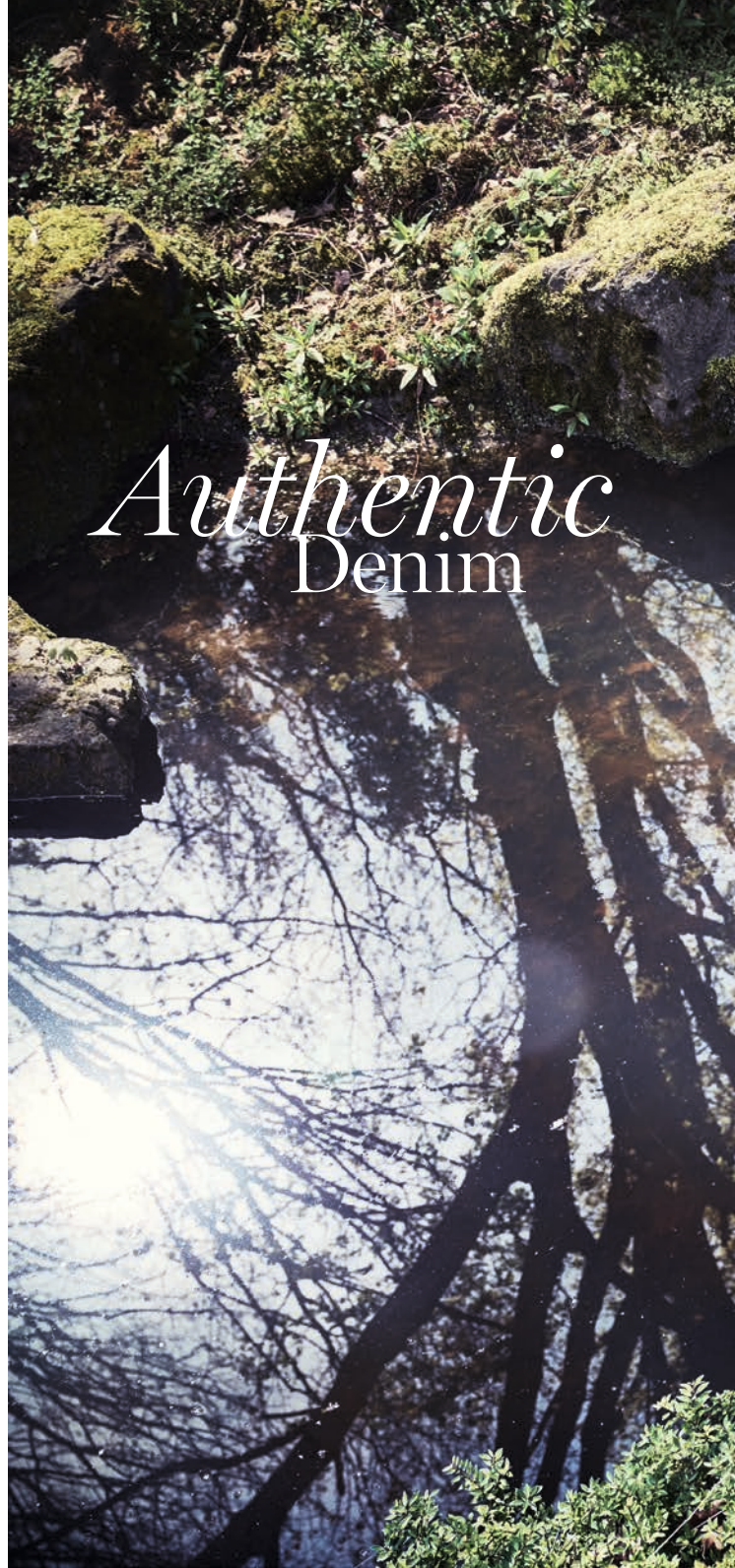




1984 SLIM, Super Stretch Dual FX Denim



Super Stretch
Denim



Authentic
Denim



1991 PIPE, Authentic Denim | Belt: 8901 Premium Belt







Fancy
Denim



Vintage



Jersey



Smart



Fancy



Business

**WE
CARE**

ALBERTO



**Inhabergeführtes Familienunternehmen
mit dem Menschen im Fokus**

Owner-managed family business
with the focus on people

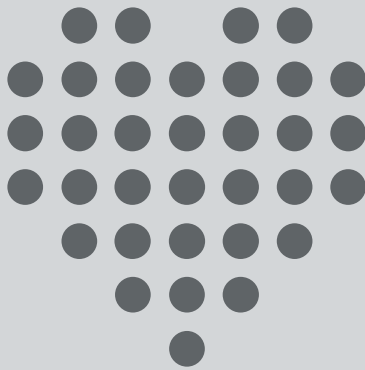
Produktion in
POLEN
RUMÄNIEN
TUNESIEN
DEUTSCHLAND



Production in
POLAND
ROMANIA
TUNISIA
GERMANY



**Entwicklung und Design mit Liebe
zum Detail in Mönchengladbach**



Development and Design Committed
to Detail in Mönchengladbach

**Optimierte Produktionskapazitäten
und -mengen auf kürzestmöglichen
Transportwegen**



Optimized production capacities and quantities
with the shortest possible transport routes

**Ressourcenschonende
industrielle Waschveredelung**

Resource-saving industrial
washing process



**OBERSTOFFE
UPPER MATERIALS**

87%
Ausnutzungsgrad
utilization rate

**ALBERTO steht für
langlebige Produkte
und pflegeleichte Materialien**

ALBERTO stands for durable products
and easy-care materials



**Reparaturservice
in hauseigener Näherei**



Repair service in our
own sewing shop

**Kreislauf von Verpackungsmaterialien
aus recycelten Rohstoffen von der
Transporttüte bis zum Kleiderbügel**

Cycle of packaging materials made from
recycled raw materials from the transport
bag to the hanger

**„Nachhaltigkeit ist eine Haltung
und endet zum Glück nie.“**

*”Sustainability is a stance
and fortunately it never ends.”*

MARCO LANOWY

Managing Director Alberto GmbH & Co. KG



**Rückverfolgbarkeit der Materialien
vom Oberstoff bis zur fertigen Hose**

Traceability of materials
from the outer fabric to
the finished pants



OEKO-TEX®
CONFIDENCE IN TEXTILES
STANDARD 100



Alle Produkte sind zertifiziert!

All products are certified!



**Lange Beziehungen zu unseren
Geschäftspartnern**

Long-term relationships with our
business partners

Materialbeschaffung
Materials sourced

95%

EUROPE
5% ASIA



**Hohe Standards an Arbeitssicherheit
und Gesundheitsschutz**

High Workplace Safety
and Health Protection
Standards



Mitglied der BSCI

Member of BSCI

AMFORI
Business Social
Compliance Initiative



**Faire Arbeitsbedingungen und Bezahlung
in unseren Partnerbetrieben**

Fair working conditions and payment in
our partner factories



**Hauseigenes Testzentrum zur Entwicklung
und Prüfung physikalischer Eigenschaften**

In-house test center for the
development and testing
of physical properties



**Kontrolle der chemischen und bekleidungsphysiologischen
Eigenschaften in unabhängigen Laboren**

Testing of chemical and clothing-physiological
properties in independent laboratories



ALBERTO FACTS

Represented in 50 countries
More than 2,000 retailers
Storage area of 10,000 square metres
90,000 pants available daily
120 employees in Mönchengladbach
1,300 employees worldwide
Production in Romania, Poland and Tunisia
We think sustainability
Family business since 1922
Procurement of goods from Europe

Perfect pants
Perfect fabrics
Perfect style
Perfect to wear
Perfect for every occasion
Perfect for your life
Because:

Pants We Love

FOR MORE INFORMATION

press.alberto-pants.com

ALBERTO GMBH & CO. KG
Rheydter Straße 19 - 31
D-41065 Mönchengladbach
phone + 49 (0) 2161 - 8192-0
hello@alberto-pants.com
www.alberto-pants.com

www.facebook.com/ALBERTO.Pants
www.instagram.com/albertopants



ALBERTO
B2B-PORTAL



MODERN SHOPPING



ALBERTO CONCEPT STORE

Hindenburgstraße 6
D-41061 Mönchengladbach
phone + 49 (0) 21 61 - 8192-811
store-mg@alberto-pants.com

Tuesday – Friday 10 – 18 Uhr
Saturday 10 – 17 Uhr



JEANS

TITEL
 Article: 1956 JIVE-C, Natural Denim
 Material: 99% cotton, 1% elastane
 Colours: nature
 Belt: 8902 Selvege Belt

#naturaldenim



CASUAL

PAGE 3
 Article: 1505 GLENN, Light Organic Cotton
 Material: 96% cotton (organic), 4% elastane
 Colours: off white, beige, military, navy
 Belt: 8901 Premium Belt

#organic



CASUAL

PAGE 4
 Article: 1505 GLENN, Light Organic Cotton
 Material: 96% cotton (organic), 4% elastane
 Colours: off white, beige, military, navy
 Belt: 8901 Premium Belt

#organic



CASUAL

PAGE 6
 Article: 1505 GLENN, Light Organic Cotton
 Material: 96% cotton (organic), 4% elastane
 Colours: off white, beige, military, navy
 Belt: 8901 Premium Belt

#organic



CASUAL

PAGE 13
 Article: 1506 JUMP, Light Cotton
 Material: 67% cotton, 30% polyamid, 3% elastane
 Colours: nature, light yellow, light orange, orange, beige, green, blue, military, light blue, navy, grey, black

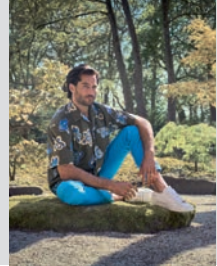
#lightcotton



CASUAL

PAGE 14
 Article: 1506 JUMP, Light Cotton
 Material: 67% cotton, 30% polyamid, 3% elastane
 Colours: nature, light yellow, light orange, orange, beige, green, blue, military, light blue, navy, grey, black

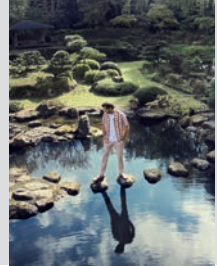
#lightcotton



CASUAL

PAGE 15
 Article: 1506 JUMP, Light Cotton
 Material: 67% cotton, 30% polyamid, 3% elastane
 Colours: nature, light yellow, light orange, orange, beige, green, blue, military, light blue, navy, grey, black

#lightcotton



PREMIUM

PAGE 16
 Article: 1910 ROB, Premium Cotton
 Material: 68% cotton, 28% polyamide, 4% elastane
 Colours: light apricot, brown, green, blue, light grey

#premiumchino



DRESSY

PAGE 25
 Article: 1930 JACK-K, Luxury Linen
 Material: 100% linen
 Colours: light apricot, brown, blue, light grey, anthracite

#linen



DRESSY

PAGE 26
 Article: 1952 JUMP-K, Smart Linen
 Material: 75% cotton, 23% linen, 2% elastane
 Colours: nature, light beige, rose, light blue

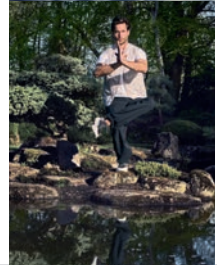
#bermuda



DRESSY

PAGE 27
 Article: 1952 JUMP-K, Smart Linen
 Material: 75% cotton, 23% linen, 2% elastane
 Colours: nature, light beige, rose, light blue

#bermuda



PERFORMANCE

PAGE 28
 Article: 1737 CLARK, Coolmax® Super Light
 Material: 100% polyester
 Colours: military, purple, royal, navy, black

#coolmax



PERFORMANCE

PAGE 32
 Article: 1935 MOVER, WR Revolutionary®
 Material: 71% polyamid, 29% elastane
 Colours: yellow, red, beige, military, green, navy, grey, black

#revolutional



PERFORMANCE

PAGE 32
 Article: 1935 MOVER, WR Revolutionary®
 Material: 71% polyamid, 29% elastane
 Colours: yellow, red, beige, military, green, navy, grey, black

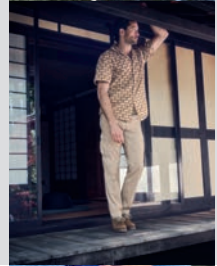
#revolutional



PERFORMANCE

PAGE 33
 Article: 1935 MOVER, WR Revolutionary®
 Material: 71% polyamid, 29% elastane
 Colours: yellow, red, beige, military, green, navy, grey, black

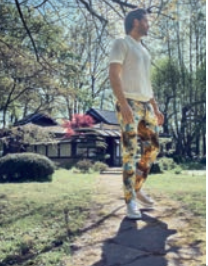
#revolutional



CASUAL

PAGE 3 4
 Article: 1904 STORM, Cool Tencel™
 Material: 65% hycell, 33% cotton, 2% elastane
 Colours: off white, beige, military, blue, light grey

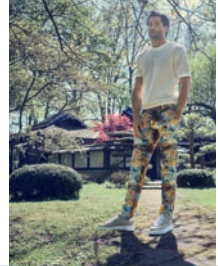
#cargo



CASUAL

PAGE 40
 Article: 1944 ROB, Fancy Jersey
 Material: 93% polyester, 7% elastane
 Colours: fantasy

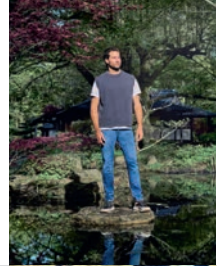
#digitalprint



CASUAL

PAGE 41
 Article: 1944 ROB, Fancy Jersey
 Material: 93% polyester, 7% elastane
 Colours: fantasy

#digitalprint



JEANS

PAGE 46
 Article: 1999 SLIM, Laser Denim
 Material: 98% cotton (organic), 2% elastane (recycled)
 Colours: fantasy

#laserprint



JEANS

PAGE 48
 Article: 1999 SLIM, Laser Denim
 Material: 98% cotton (organic), 2% elastane (recycled)
 Colours: fantasy

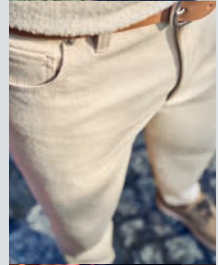
#laserprint



JEANS

PAGE 52
 Article: 1956 JIVE-C, Natural Denim
 Material: 99% cotton, 1% elastane
 Colours: nature
 Belt: 8902 Selvege Belt

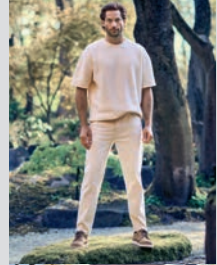
#naturaldenim



JEANS

PAGE 52
 Article: 1956 JIVE-C, Natural Denim
 Material: 99% cotton, 1% elastane
 Colours: nature
 Belt: 8902 Selvege Belt

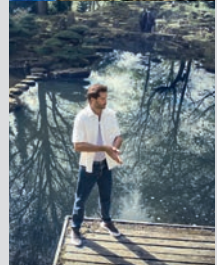
#naturaldenim



JEANS

PAGE 53
 Article: 1956 JIVE-C, Natural Denim
 Material: 99% cotton, 1% elastane
 Colours: nature
 Belt: 8902 Selvege Belt

#naturaldenim



JEANS

PAGE 54
 Article: 1970 JIVE-C, New Vintage
 Material: 100% cotton,
 Colours: denim

#widefit



PREMIUM

PAGE 58
 Article: 1961 SLIM, Premium Overdyed Denim
 Material: 94% cotton, 4% elastomultiester 1400®, 2% elastane
 Colours: beige, brown, blue, navy
 Belt: 8901 Premium Belt

#premium



PREMIUM

PAGE 59
 Article: 1961 SLIM, Premium Overdyed Denim
 Material: 94% cotton, 4% elastomultiester 1400®, 2% elastane
 Colours: beige, brown, blue, navy
 Belt: 8901 Premium Belt

#premium



JEANS

PAGE 60
 Article: 1973 SLIPE, Super Stretch Dual FX Denim
 Material: 92% cotton, 6% elastomultiester 1400®, 2% elastane
 Colours: denim

#vintagedenim



JEANS

PAGE 61
 Article: 1973 SLIPE, Super Stretch Dual FX Denim
 Material: 92% cotton, 6% elastomultiester 1400®, 2% elastane
 Colours: denim

#vintagedenim



JEANS

PAGE 67
 Article: 1984 SLIM, Super Stretch Dual FX
 Material: 92% cotton, 6% elastomultiester 1400®, 2% elastane
 Colours: denim, grey

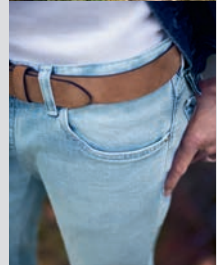
#superstretch



JEANS

PAGE 68
 Article: 1991 PIPE, Authentic Denim
 Material: 98% cotton (organic), 2% elastane (recycled)
 Colours: denim

#authentic



JEANS

PAGE 68
 Article: 1991 PIPE, Authentic Denim
 Material: 98% cotton (organic), 2% elastane (recycled)
 Colours: denim

#authentic



JEANS

PAGE 69
 Article: 1991 PIPE, Authentic Denim
 Material: 98% cotton (organic), 2% elastane (recycled)
 Colours: denim

#authentic



BUSINESS

PAGE 8
 Article: 0001 ROB, Business Cotton
 Material: 58% cotton, 38% polyamid, 4% elastane
 Colours: navy, beige, brown, black
 Belt: 8901 Premium Belt

#businesscotton



BUSINESS

PAGE 10
 Article: 0001 ROB, Business Cotton
 Material: 58% cotton, 38% polyamid, 4% elastane
 Colours: navy, beige, brown, black
 Belt: 8901 Premium Belt

#businesscotton



BUSINESS

PAGE 11
 Article: 0001 ROB, Business Cotton
 Material: 58% cotton, 38% polyamid, 4% elastane
 Colours: navy, beige, brown, black
 Belt: 8901 Premium Belt

#businesscotton



CASUAL

PAGE 12
 Article: 1506 JUMP, Light Cotton
 Material: 67% cotton, 30% polyamid, 3% elastane
 Colours: nature, light yellow, light orange, beige, green, blue, military, light blue, navy, grey, black

#lightcotton



PREMIUM

PAGE 18
 Article: 1910 ROB, Premium Cotton
 Material: 68% cotton, 28% polyamide, 4% elastane
 Colours: light apricot, brown, green, blue, light grey

#premiumchino



CASUAL

PAGE 20
 Article: 1924 JUMP, Tropical Linen
 Material: 67% linen, 30% cotton, 3% elastane
 Colours: fantasy

#linen



CASUAL

PAGE 22
 Article: 1924 JUMP, Tropical Linen
 Material: 67% linen, 30% cotton, 3% elastane
 Colours: fantasy

#linen



DRESSY

PAGE 24
 Article: 1930 JACK-K, Luxury Linen
 Material: 100% linen
 Colours: light apricot, brown, blue, light grey, anthracite

#linen



PERFORMANCE

PAGE 30
 Article: 1737 CLARK, Coolmax® Super Light
 Material: 100% polyester
 Colours: military, purple, royal, navy, black

#coolmax



PERFORMANCE

PAGE 31
 Article: 1737 CLARK, Coolmax® Super Light
 Material: 100% polyester
 Colours: military, purple, royal, navy, black

#coolmax



PERFORMANCE

PAGE 31
 Article: 1737 CLARK, Coolmax® Super Light
 Material: 100% polyester
 Colours: military, purple, royal, navy, black

#coolmax



PERFORMANCE

PAGE 31
 Article: 1737 CLARK, Coolmax® Super Light
 Material: 100% polyester
 Colours: military, purple, royal, navy, black

#coolmax



CASUAL

PAGE 35
 Article: 1904 STORM, Cool Tencel™
 Material: 65% lyocell, 33% cotton, 2% elastane
 Colours: off white, beige, military, blue, light grey

#cargo



DRESSY

PAGE 36
 Article: 1938 MIKE-C, Tech Wool
 Material: 100% polyester
 Colours: navy, mid grey, grey, black

#techwool



DRESSY

PAGE 37
 Article: 1938 MIKE-C, Tech Wool
 Material: 100% polyester
 Colours: navy, mid grey, grey, black

#techwool



DRESSY

PAGE 39
 Article: 1941 ROB, Glencheck Jersey
 Material: 78% polyester, 17% viscose, 5% elastane
 Colours: check

#jersey



JEANS

PAGE 49
 Article: 1999 SLIM, Laser Denim
 Material: 98% cotton (organic), 2% elastane (recycled)
 Colours: fantasy

#laserprint



JEANS CHINO

PAGE 50
 Article: 1582 ROB-7, Coloured Denim
 Material: 89% cotton, 8% elastomultiester T400®, 3% elastane
 Colours: white, orange, beige, blue, royal, navy, grey

#jeans_chino



JEANS CHINO

PAGE 51
 Article: 1582 ROB-7, Coloured Denim
 Material: 89% cotton, 8% elastomultiester T400®, 3% elastane
 Colours: white, orange, beige, blue, royal, navy, grey

#jeans_chino



JEANS

PAGE 52
 Article: 1956 JIVE-C, Natural Denim
 Material: 99% cotton, 1% elastane
 Colours: nature
 Belt: 8902 Selveged Belt

#naturaldenim



JEANS

PAGE 55
 Article: 1970 JIVE-C, New Vintage
 Material: 100% cotton,
 Colours: denim

#widefit



JEANS

PAGE 55
 Article: 1970 JIVE-C, New Vintage
 Material: 100% cotton,
 Colours: denim

#widefit



PREMIUM

PAGE 58
 Article: 1961 SLIM, Premium Overdyed Denim
 Material: 94% cotton, 4% elastomultiester T400®, 2% elastane
 Colours: beige, brown, blue, navy
 Belt: 8901 Premium Belt

#premium



PREMIUM

PAGE 58
 Article: 1961 SLIM, Premium Overdyed Denim
 Material: 94% cotton, 4% elastomultiester T400®, 2% elastane
 Colours: beige, brown, blue, navy
 Belt: 8901 Premium Belt

#premium



JEANS

PAGE 61
 Article: 1973 SLIPE, Super Stretch Dual FX Denim
 Material: 92% cotton, 6% elastomultiester T400®, 2% elastane
 Colours: denim

#vintagedenim



JEANS

PAGE 62
 Article: 1973 SLIPE, Super Stretch Dual FX Denim
 Material: 92% cotton, 6% elastomultiester T400®, 2% elastane
 Colours: denim

#vintagedenim



JEANS

PAGE 63
 Article: 1973 SLIPE, Super Stretch Dual FX Denim
 Material: 92% cotton, 6% elastomultiester T400®, 2% elastane
 Colours: denim

#vintagedenim



JEANS

PAGE 66
 Article: 1984 SLIM, Super Stretch Dual FX
 Material: 92% cotton, 6% elastomultiester T400®, 2% elastane
 Colours: denim, grey

#superstretch



JEANS

PAGE 70
 Article: 1998 SLIM, Fancy Jeans
 Material: 55% polyester, 30% cotton, 13% viscose, 2% elastane
 Colours: fantasy

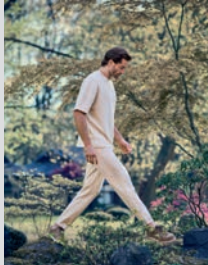
#fancy



JEANS

PAGE 71
 Article: 1998 SLIM, Fancy Jeans
 Material: 55% polyester, 30% cotton, 13% viscose, 2% elastane
 Colours: fantasy

#fancy



JEANS

PAGE 76
 Article: 1956 JIVE-C, Natural Denim
 Material: 99% cotton, 1% elastane
 Colours: nature
 Belt: 8902 Selveged Belt

#naturaldenim



JEANS

BACK
 Article: 1991 PIPE, Authentic Denim
 Material: 98% cotton (organic), 2% elastane (recycled)
 Colours: denim

#authentic



alberto-pants.com
SINCE 1922 IN MÖNCHENGLADBACH

JEANS
CASUAL
DRESSY
PERFORMANCE